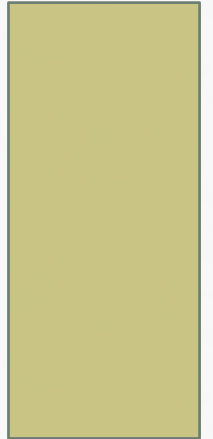


BRIDGE FAILURE

PROF. MIRZA ALLAF



MANIFESTATIONS OF FAILURE

- Pain
- Inability to function
- Dissatisfaction with esthetics
- Broken teeth and/or restoration
- Inflammatory swelling
- Bad taste
- Bad breath
- Bleeding gums

CAUSES OF FIXED PROSTHESIS FAILURE

- Improper case selection
- Faulty diagnosis and treatment plan
- Inaccurate clinical or laboratory procedures
- Poor patient care and maintenance following insertion

CLASSIFICATION OF FIXED PROSTHESIS FAILURE



Biological

- Discomfort
- Caries
- Pulp injury
- Periodontal breakdown
- Occlusal problems
- Tooth perforation
- Tooth fracture

Mechanical

- Looseness or dislodgement
- Prosthesis fracture
- Occlusal wear or perforation

Esthetic

- At the time of cementation
- Delayed esthetic failure

BIOLOGICAL FAILURES

BIOLOGICAL FAILURES

```
graph TD; A[BIOLOGICAL FAILURES] --> B[Periodontal breakdown]; A --> C[Caries]; A --> D[Occlusal problems];
```

Periodontal breakdown

- Inadequate abutment teeth
- Periodontally affected abutment teeth
- Poor oral hygiene
- Improperly constructed prosthesis

Caries

- Methods of detection
- Detection
- Management

Occlusal problems

Periodontal breakdown



Occlusal problems



Caries

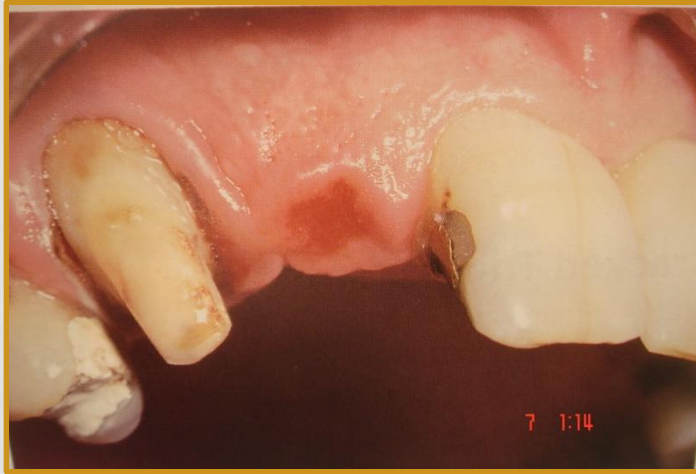


BIOLOGICAL FAILURES



- Pressure on soft tissue
- Traumatic occlusion
- Torque
- Cervical hypersensitivity

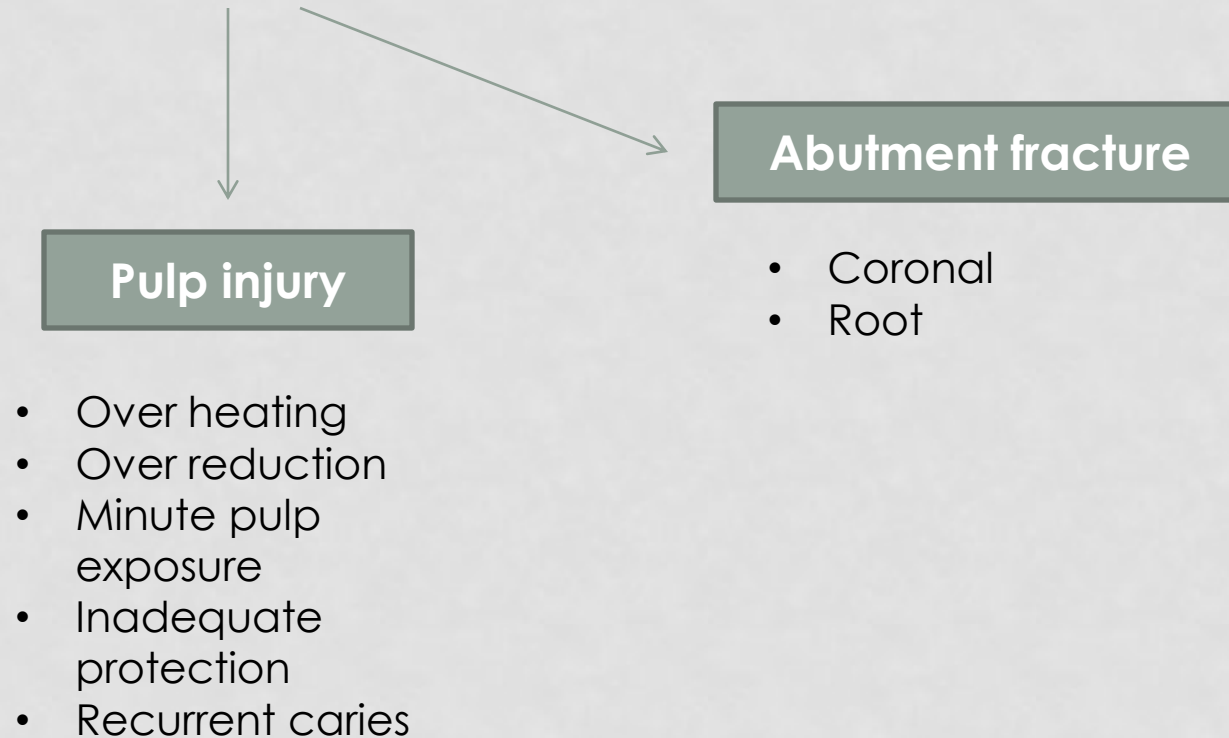
Discomfort



Tooth perforation



BIOLOGICAL FAILURES



Pulp injury



Abutment fracture



MECHANICAL FAILURES

MECHANICAL FAILURES

Occlusal wear or perforation

Looseness or dislodgement

Prosthesis fracture

- Joint fractures
- Facing fractures
- All ceramic crown fracture
 - Faulty preparation
 - Faulty construction
 - Faulty cementation
- Post fracture
- Lack of retention
 - Faulty preparation
 - Improper design
 - Improper construction
- Recurrent caries
- Mobility
- Torque
- Faulty cementation

Prosthesis fracture



Occlusal wear



Looseness



ESTHETIC FAILURES

ESTHETIC FAILURES

```
graph TD; A[ESTHETIC FAILURES] --> B[At the time of cementation]; A --> C[Delayed esthetic failures];
```

At the time of cementation

- Actual failures
 - Color mismatch
 - Poor tooth contour, marginal roughness & extension
 - Metal display in partial coverage
 - Improper pontic placement
 - Porcelain fracture during cementation
- Color blindness
- Unrealistic complains by the pt.
 - Inadequate communication
 - Unrealistic expectations of pt.

Delayed esthetic failures

- Gingival recession
- Sub pontic tissue shrinkage
- Periodontal surgery
- Porosity
- Drifting of anterior teeth
- wear



AVOIDING FAILURES

- Caution at the planning stage
- Confirmation of diagnosis and treatment plan for inexperienced operator
- Expertise of the technician
- Treatment of preoperative problems
- Search for the primary cause of failure rather than the apparent

THANK YOU